



TUBE TURN INDIA
PVT. LTD



WELCOME TO
TUBE TURN
INDIA
PRIVATE LIMITED



Company Profile

*Manufacturers of Pipe fittings, Piping Spools &
Static Equipment in India....*

Company Overview

Tube Turn (India) Pvt Ltd is a leading provider of piping solutions, specializing in high-quality pipe fittings. With nearly three decades of experience, we offer a comprehensive range of butt-weld, socket-weld/screwed forgings, and branched outlet fittings, meticulously crafted to meet **ASTM/ASME/MSSP** standards.

Beyond **pipe fittings**, we have expanded our offerings to include **piping spools, T-strainers, and fabricated static** equipment such as heat exchangers, distillation columns, and pressure vessels. Our comprehensive range of products and services allows us to provide a one-stop solution for your piping needs.

Our in-house testing facilities ensure stringent quality control, while our extensive inventory and efficient manufacturing processes enable rapid delivery times. By combining our expertise, quality focus, and customer-centric approach, we deliver high-quality products and services at competitive prices.



OUR PRODUCTS

PIPING SPOOLS



PIPE FITTINGS

BUTT-WELD



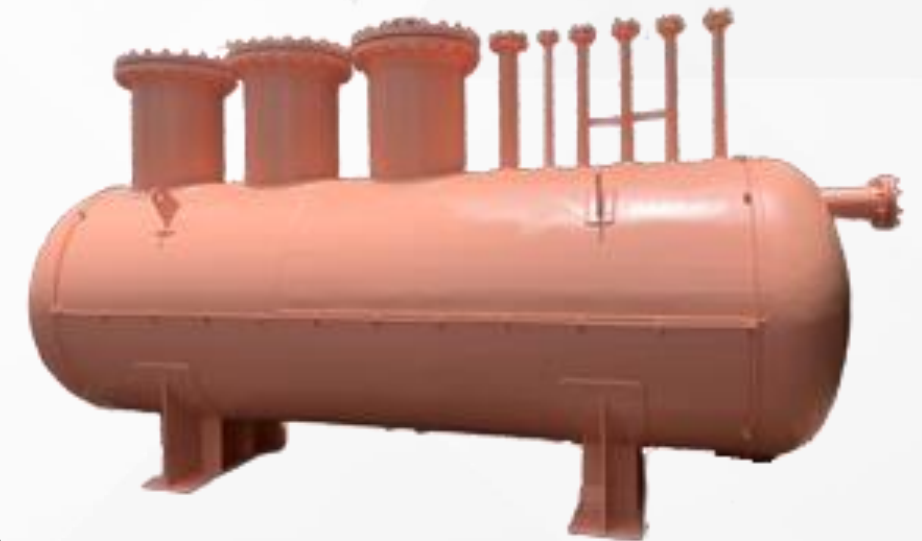
S/W & SCREWED FORGINGS



BRANCHED OUTLET



STATIC EQUIPMENT



PIPE-FITTINGS MANUFACTURING RANGE

SEAMLESS PIPE FITTINGS RANGE

Product Type	FERROUS MATERIAL		NON - FERROUS MATERIAL	
	Size Range	Schedule / Thickness	Size Range	Schedule / Thickness
Reducer (Concentric / Eccentric	2" to 24"	Upto Sch - XXS/ 85mm	2" to 14"	Up to Sch- XXS
Return Bend	2" to 18"	Upto Sch - XXS/ 85mm	2" to 12"	Up to Sch- XXS
Elbow	2" to 30"	Upto Sch - XXS/ 85mm	2" to 20"	Up to Sch- XXS
Tee (Equal /Un Equal)	2" to 24"	Upto Sch - XXS/ 85mm	2" to 14"	Up to Sch- XXS
Stub End	2" to 24"	Upto Sch - XXS/ 85mm	2" to 14"	Up to Sch- XXS
Cross (Equal / Un Equal)	2" to 18"	Upto Sch - XXS/ 85mm	2" to 14"	Up to Sch- XXS
Cap	2" to 60"	Upto Sch - XXS/ 85mm	2" to 24"	Up to Sch- XXS
Elbolet/Latrolet/Weldolet	½" to 24"	Upto Sch 160/XXS	½" to 24"	Upto Sch 160/XXS
Couplings	½" to 4"	All sizes	½" to 4"	All sizes
Thredolet/Sockolet	½" to 3"	3#, 6#, 9#	½" to 3"	3#, 6#, 9#

PIPE-FITTINGS MANUFACTURING RANGE

WELDED PIPE FITTINGS RANGE

Product Type	FERROUS MATERIAL		NON - FERROUS MATERIAL	
	Size Range	Schedule / Thickness	Size Range	Schedule / Thickness
Elbow	8" to 96"	Upto Sch - XXS/ 85mm	8" to 24"	Up to Sch- XXS
Reducer (Concentric / Eccentric	8" to 96"	Upto Sch - XXS/ 85mm	2" to 72"	Up to Sch- XXS
Tee (Equal /Un Equal)	8" to 96"	Upto Sch - XXS/ 85mm	2" to 24"	Up to Sch- XXS
Stub End	8" to 72"	Upto Sch - XXS/ 85mm	2" to 36"	Up to Sch- XXS
Cross (Equal / Un Equal)	8" to 30"	Upto Sch - XXS/ 85mm	2" to 30"	Up to Sch- XXS

PIPE FITTINGS MATERIAL OF CONSTRUCTION

Material	
Material	Grades
Low Temperature Carbon Steel	ASTM A420 WPL3, A420 WPL6
Carbon Steel	ASTM A 234 WPB, WPBW, WPHY 46, WPHY 52, WPH 60, WPHY 65 & WPHY 70.
Stainless Steel	ASTM A403 WP Gr. 304, 304L, 304H, 309, 310, 316, 316L, 316Ti, 317L, 321, 347, 347H, 904L
Duplex Steel	ASTM A 815, ASME SA 815 UNS 31803, UNS 32205, UNS 32750 & UNS 32760 (Dual Certified)
Alloy Steel	ASTM/ ASME A/SA 234 Gr. WP 1, WP5, WP9, WP 11, WP 12, WP22, WP 91

NON - FERROUS MATERIAL

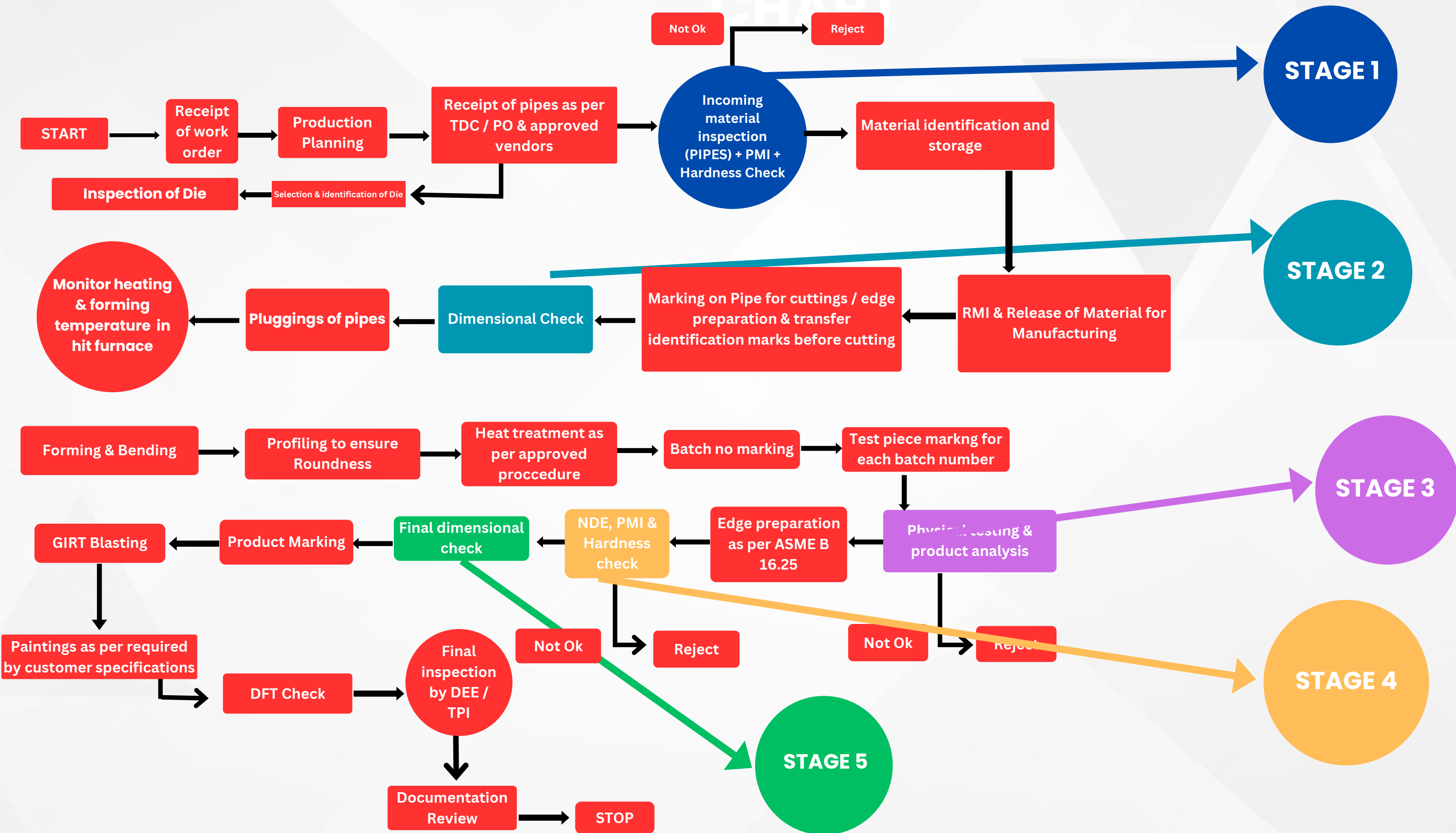
Material	Grades
Nickel	ASTM / ASME SB 336 UNS 2200 (NICKEL 200), ASTM/ASME SB 363, ASTM /ASME SB 366, UNS 2201 (NICKEL 201),UNS 4400 (MONEL 400), UNS 8020 (ALLOY 20 / 20)
Alloy	CB 3, UNS 8825 INCONEL (825), UNS 6600 (INCONEL 600), UNS 6625, (INCONEL 625), UNS 10276 (HASTELLOY C 276)

With a comprehensive range of ferrous and non-ferrous pipe fittings, we also offer additional services such as cladding, stellite/epoxy/3LPE coating, and weld overlay.



TUBE TURN INDIA
PVT. LTD

FITTINGS PRODUCTION FLOW



PIPE FITTINGS

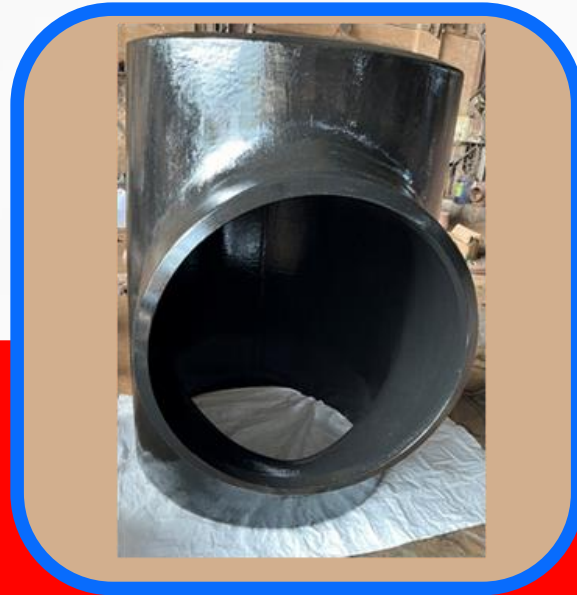
We have conducted and qualified design proof tests, as per ASTM B.16.9 ($P=2*ST/D$), under TPI witness for various thicknesses and all types of fittings.



**4" S80S Inconel
180° Bend
Client: Reliance**



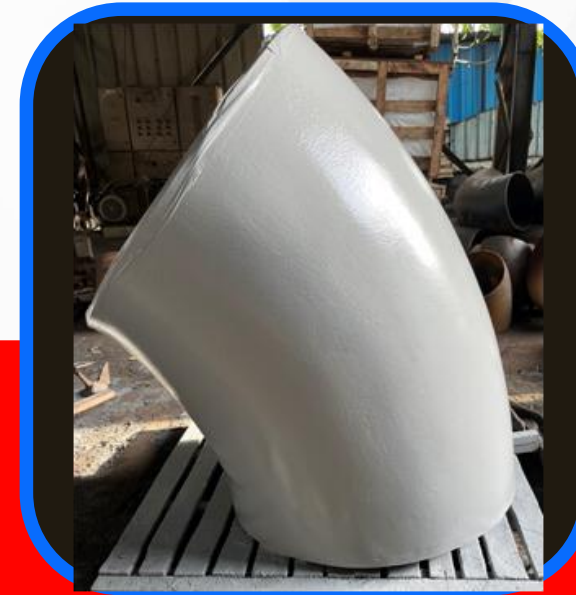
**18" S80 Inconel
90° Elbow
Client: Kalhour
Oilfield Eq. Ltd. (UAE)**



**42" x 36" 65mm
CS R. Tee
Client: VKVC
(EIL)**



**28" 19mm SS304H
Fab. "Y"
Client: Kalhour
Oilfield Eq. Ltd. (UAE)**



**42" XS Epoxy
coated 45° Elbow
Client: IOCL**



**70" 19mm ext.
Epoxy coated CS
Tee Client: IOCL**

PIPING SPOOLS

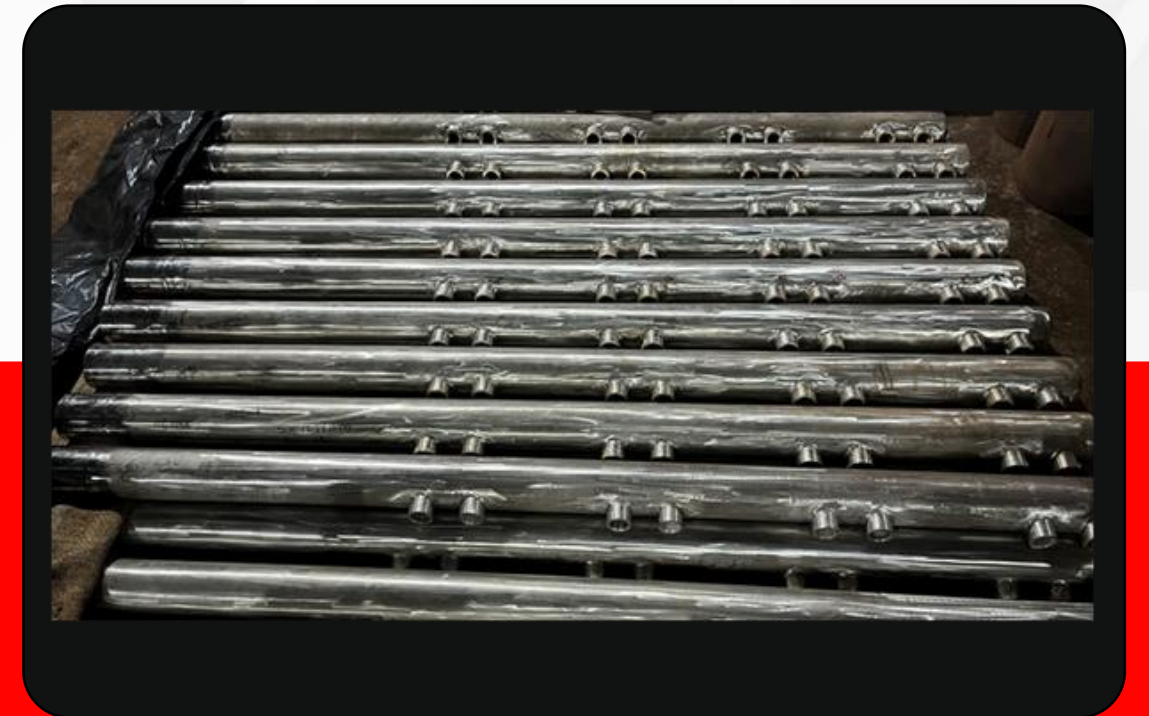
We offer comprehensive piping solutions, including shop fabrication of piping spools involving semi-automatic SAW/Arc/Argon welding, CNC beveling, radiography, heat treatment, hydrotest, pickling, passivation, blasting, and painting.



24" 77 mm P22 Steam Header
Client: Bhushan Energy



P22 Mixing Tee Spool
Client: IOCL



SS 316 Piping Spools
Client: IDE Technologies

STATIC EQUIPMENT

Beyond heavy equipment fabrication, we also provide engineering services for detailed mechanical design of equipment based on client data sheets.



**Crude Distillation
Column**



**Asphalt Oxidation
Reactor**



**P5 Shell and Tube
Heat Exchangers**



TESTING PROCEDURES

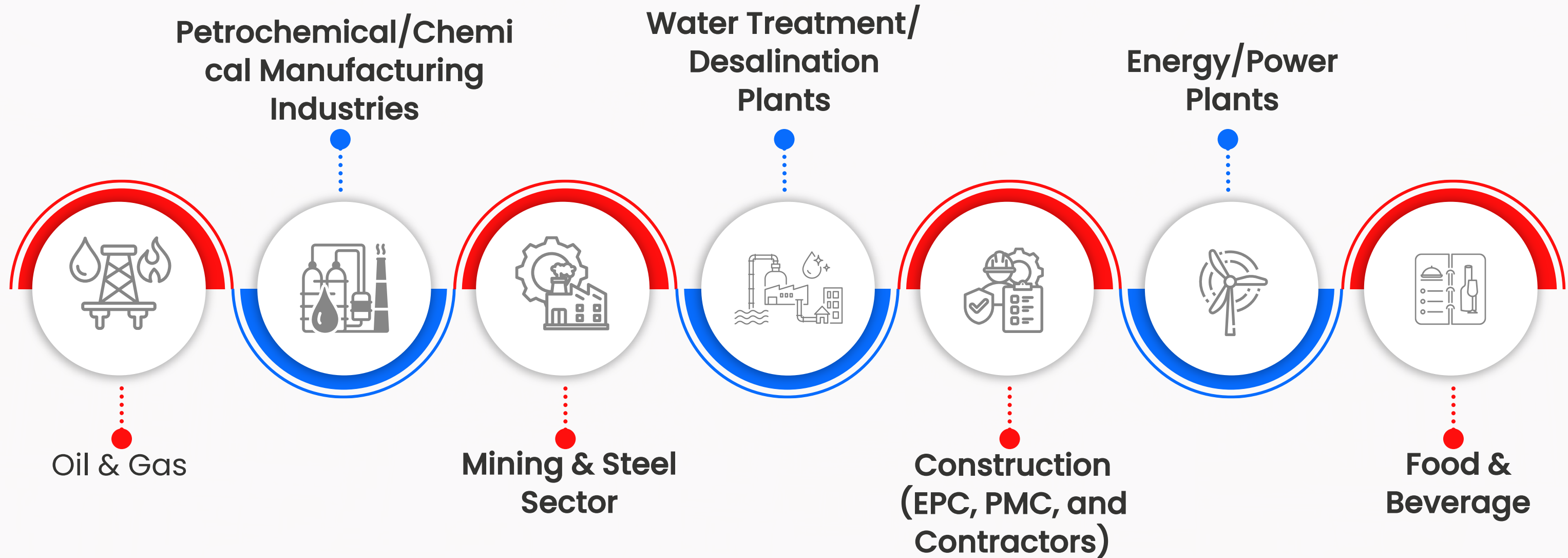
Destructive procedures:

- ✔ SPECTRO metal analyzing
- ✔ Mechanical/Ultimate Tensile Strength Testing
- ✔ Impact Testing
- ✔ HIC Testing

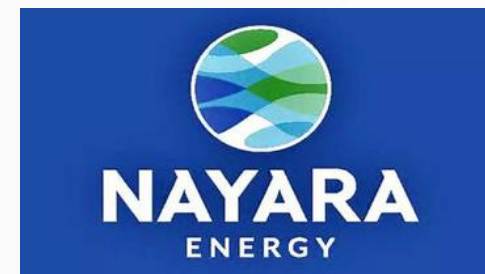
NDT procedures:

- ✔ Ultrasonic Testing
- ✔ Magnetic Particle Examination
- ✔ Radiographic Examination
- ✔ Liquid Penetration Examination

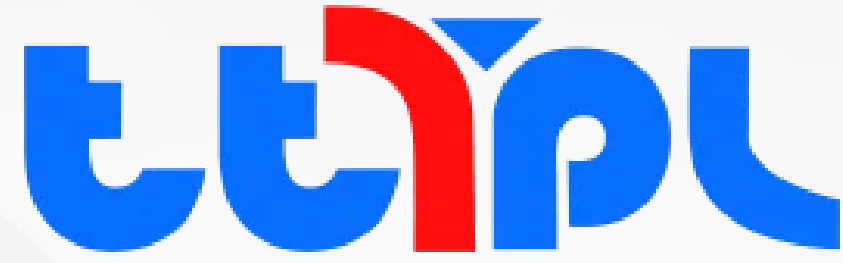
MARKETS SERVED



CLIENT'S



TUBE TURN INDIA PVT. LTD



TUBE TURN INDIA
PVT. LTD

Thank-you For The Interest Evinced in Our Company



tubeturnindia.com



ashit@tubeturnindia.com



Ashit Kadakia 9820016960

tubeturnindia.com



yash@tubeturnindia.com



Yash Kadakia 9820056960



R 808, TTC Industrial Area,
Thane- Belapur Road, MIDC
Rabale, Navi Mumbai -400 7001
Telephone : +91 22 2769 5430
Telephone : +91 22 6516 2295
Fax : +91 22 2769 5431
info@tubeturnindia.com

R 945, TTC Industrial Area,
Thane- Belapur Road, MIDC
Rabale, Navi Mumbai -400 7001
Telephone : +91 22 2764 2013
Telephone : +91 22 2764 2014
Fax : +91 22 2769 5431
info@tubeturnindia.com

A432, TTC Industrial Area,
MIDC Mahape, Navi
Mumbai-400 705.
Tele Fax : +91 22 2778 2323
info@tubeturnindia.com